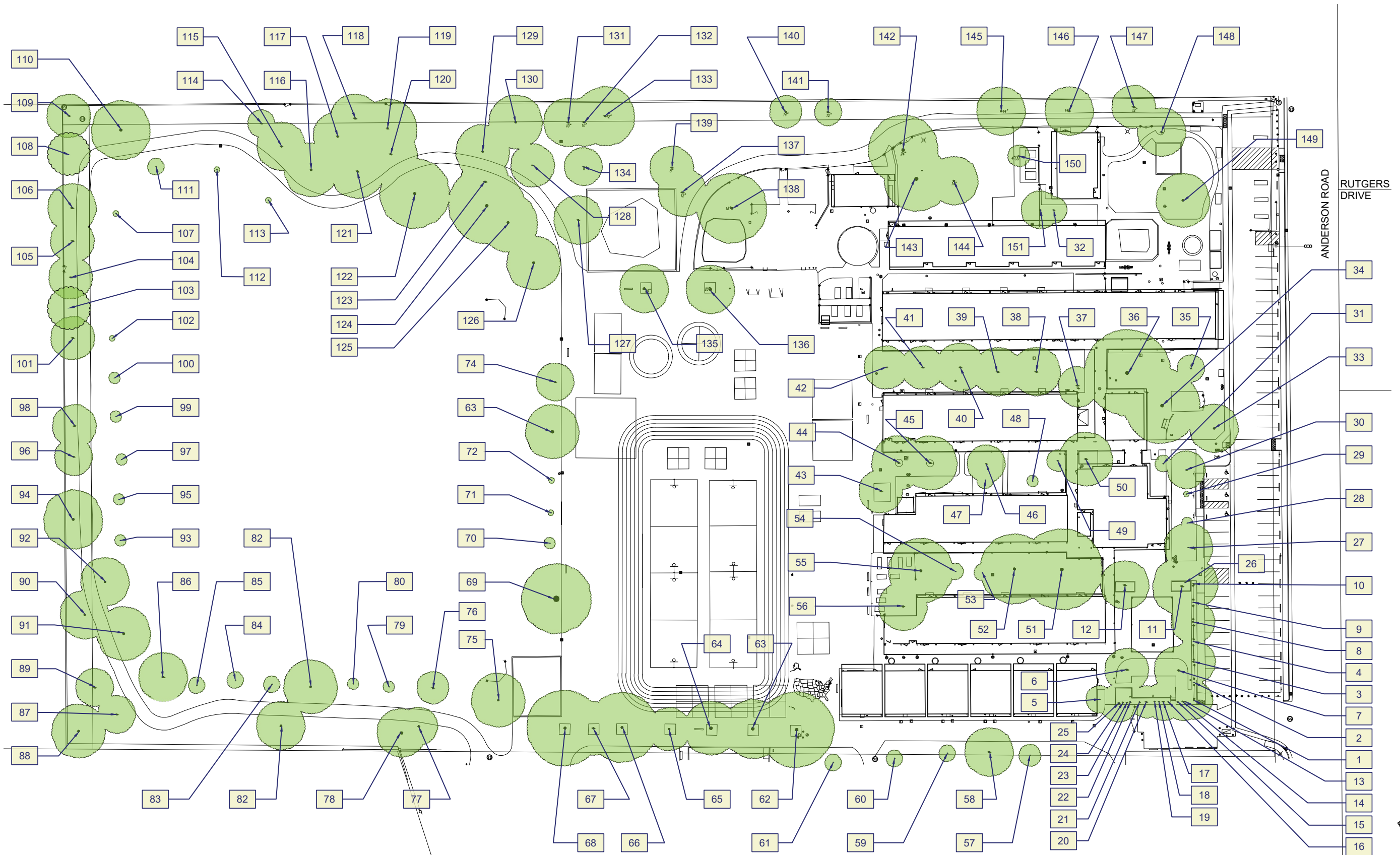


**Cesar Chavez Elementary School**  
1221 Anderson Rd, Davis, CA 95616



## Tree Data

| ID    | Tree species - Common Name | Botanical Name           | Deciduous/<br>Evergreen | Approx.<br>Height<br>Range<br>(ft) | Approx.<br>Canopy<br>Width (ft) | Trunk<br>Size<br>DBH<br>(in) | Observable Health Condition  | Notes |
|-------|----------------------------|--------------------------|-------------------------|------------------------------------|---------------------------------|------------------------------|--|-------|
| CC-1  | Crape Myrtle               | Lagerstroemia indica     | Deciduous               | 25                                 | 16                              | 7                            | No observable problems   |       |
| CC-2  | Crape Myrtle               | Lagerstroemia indica     | Deciduous               | 17                                 | 11                              | 4                            | No observable problems   |       |
| CC-3  | Crape Myrtle               | Lagerstroemia indica     | Deciduous               | 28                                 | 22                              | 8                            | No observable problems   |       |
| CC-4  | Crape Myrtle               | Lagerstroemia indica     | Deciduous               | 20                                 | 17                              | 1                            | No observable problems   |       |
| CC-5  | Crape Myrtle               | Lagerstroemia indica     | Deciduous               | 28                                 | 26                              | 7                            | No observable problems   |       |
| CC-6  | Crape Myrtle               | Lagerstroemia indica     | Deciduous               | 22                                 | 20                              | 3                            | No observable problems   |       |
| CC-7  | Crape Myrtle               | Lagerstroemia indica     | Deciduous               | 37                                 | 26                              | 8                            | Sucker branching throughout canopy   |       |
| CC-8  | Chinese Pistache           | Pistacia chinensis       | Deciduous               | 44                                 | 40                              | 12                           | Surface roots  |       |
| CC-9  | Chinese Pistache           | Pistacia chinensis       | Deciduous               | 32                                 | 42                              | 13                           | Some surface roots   |       |
| CC-10 | Chinese Pistache           | Pistacia chinensis       | Deciduous               | 44                                 | 42                              | 12                           | No observable problems   |       |
| CC-11 | Chinese Pistache           | Pistacia chinensis       | Deciduous               | 46                                 | 34                              | 12                           | No observable problems   |       |
| CC-12 | Cherry                     | Prunus                   | Deciduous               | 20                                 | 17                              | 4                            | Uprooting adjacent portable building foundation, broken leader, improper pruning | Multi |
| CC-13 | Redwood                    | Sequoia sempervirens     | Evergreen               | 41                                 | 20                              | 10                           | No observable problems   |       |
| CC-14 | Redwood                    | Sequoia sempervirens     | Evergreen               | 41                                 | 20                              | 12                           | No observable problems   |       |
| CC-15 | Redwood                    | Sequoia sempervirens     | Evergreen               | 29                                 | 15                              | 6                            | No observable problems   |       |
| CC-16 | Redwood                    | Sequoia sempervirens     | Evergreen               | 24                                 | 15                              | 5                            | No observable problems   |       |
| CC-17 | Redwood                    | Sequoia sempervirens     | Evergreen               | 35                                 | 8                               | 11                           | No observable problems   |       |
| CC-18 | Redwood                    | Sequoia sempervirens     | Evergreen               | 33                                 | 18                              | 7                            | No observable problems   |       |
| CC-19 | Redwood                    | Sequoia sempervirens     | Evergreen               | 33                                 | 17                              | 7                            | No observable problems   |       |
| CC-20 | Redwood                    | Sequoia sempervirens     | Evergreen               | 37                                 | 21                              | 10                           | No observable problems   |       |
| CC-21 | Redwood                    | Sequoia sempervirens     | Evergreen               | 33                                 | 21                              | 7                            | No observable problems   |       |
| CC-22 | Redwood                    | Sequoia sempervirens     | Evergreen               | 35                                 | 22                              | 9                            | No observable problems   |       |
| CC-23 | Redwood                    | Sequoia sempervirens     | Evergreen               | 39                                 | 24                              | 8                            | No observable problems   |       |
| CC-24 | Redwood                    | Sequoia sempervirens     | Evergreen               | 46                                 | 20                              | 10                           | No observable problems   |       |
| CC-25 | Redwood                    | Sequoia sempervirens     | Evergreen               | 39                                 | 18                              | 10                           | No observable problems   |       |
| CC-26 | Evergreen Pear             | Pyrus kawakamii          | Evergreen               | 31                                 | 17                              | 3                            | A couple suckers at the base   |       |
| CC-27 | Crape Myrtle               | Lagerstroemia indica     | Deciduous               | 24                                 | 25                              | 3                            | No observable problems   |       |
| CC-28 | Columnar English Oak       | Quercus robur fastigiata | Deciduous               | 19                                 | 7                               | 1                            | Damage at base   |       |
| CC-29 | Columnar English Oak       | Quercus robur fastigiata | Deciduous               | 14                                 | 3                               | 1                            | No observable problems   |       |
| CC-30 | Crape Myrtle               | Lagerstroemia indica     | Deciduous               | 20                                 | 13                              | 3                            | Sucker growth, some damage at base   |       |
| CC-31 | Fig                        | Ficus carica             | Deciduous               | 17                                 | 13                              | 4                            | Damage and what looks like old suckers at base that were pruned                  |       |
| CC-32 | Sawleaf Zelkova            | Zelkova serrata          | Deciduous               | 31                                 | 22                              | 5                            | Growing right at fence   |       |
| CC-33 | Oranmental Pear            | Pyrus calleryana         | Deciduous               | 42                                 | 37                              | 17                           | Surface roots  |       |
| CC-34 | Fruitless Mulberry         | Morus alba 'fruitless'   | Deciduous               | 62                                 | 53                              | 29                           | Surface roots, canker  |       |
| CC-35 | Redwood                    | Sequoia sempervirens     | Evergreen               | 29                                 | 15                              | 7                            | No observable problems   |       |

Data Collection - Cesar Chavez Elementary School - Tree Data

|       |                    |                                  |           |    |    |    |   |
|-------|--------------------|----------------------------------|-----------|----|----|----|---|
| CC-36 | Sawleaf Zelkova    | Zelkova serrata                  | Deciduous | 61 | 70 | 38 | Surface roots   |
| CC-37 | California Juniper | Juniperus californica            | Evergreen | 26 | 26 | 11 | No observable problems  |
| CC-38 | Honey Locust       | Gleditsia triacanthos            | Deciduous | 40 | 33 | 14 | No observable problems  |
| CC-39 | Honey Locust       | Gleditsia triacanthos            | Deciduous | 40 | 33 | 14 | Damage at base of trunk   |
| CC-40 | Honey Locust       | Gleditsia triacanthos            | Deciduous | 33 | 24 | 11 | No observable problems  |
| CC-41 | Honey Locust       | Gleditsia triacanthos            | Deciduous | 30 | 22 | 11 | Exposed hardwood, damage at base of trunk, dead and crossing branches                     |
| CC-42 | Honey Locust       | Gleditsia triacanthos            | Deciduous | 33 | 25 | 8  | Serious decay at base of tree and trunk   |
| CC-43 | Common Hackberry   | Celtis occidentalis              | Deciduous | 46 | 31 | 15 | Mistletoe, surface roots  |
| CC-44 | Chinese Pistache   | Pistacia chinensis               | Deciduous | 42 | 35 | 11 | No observable problems  |
| CC-45 | Chinese Pistache   | Pistacia chinensis               | Deciduous | 41 | 40 | 11 | Surface roots   |
| CC-46 | Chinese Pistache   | Pistacia chinensis               | Deciduous | 26 | 22 | 8  | No observable problems  |
| CC-47 | Madrone            | Arbutus 'Marina'                 | Evergreen | 13 | 9  | 4  | Damage at base of trunk   |
| CC-48 | Cretan Maple       | Acer sempervirens                | Deciduous | 15 | 7  | 2  | Exposed roots, trunk damage, damage at base of trunk                                      |
| CC-49 | Valley Oak         | Quercus lobata                   | Deciduous | 42 | 15 | 7  | No observable problems  |
| CC-50 | Chinese Pistache   | Pistacia chinensis               | Deciduous | 46 | 31 | 13 | No observable problems  |
| CC-51 | Oranmental Pear    | Pyrus calleryana                 | Deciduous | 53 | 46 | 29 | Surface roots, trunk damage   |
| CC-52 | Oranmental Pear    | Pyrus calleryana                 | Deciduous | 55 | 51 | 25 | Surface roots, some suckers, damage at trunk 5'   |
| CC-53 | Sawleaf Zelkova    | Zelkova serrata                  | Deciduous | 18 | 9  | 3  | No observable problems  |
| CC-54 | Sawleaf Zelkova    | Zelkova serrata                  | Deciduous | 20 | 15 | 3  | Trunk damage  |
| CC-55 | Oranmental Pear    | Pyrus calleryana                 | Deciduous | 44 | 53 | 23 | Some surface roots and suckers, branch damage   |
| CC-56 | Juniper            | Juniperus x pfitzeriana 'Glauca' | Evergreen | 20 | 18 | 5  | No observable problems  |
| CC-57 | Sawleaf Zelkova    | Zelkova serrata                  | Deciduous | 22 | 15 | 2  | No observable problems  |
| CC-58 | Chinese Hackberry  | Celtis sinensis                  | Deciduous | 40 | 33 | 14 | Surface roots, buttress roots   |
| CC-59 | Sawleaf Zelkova    | Zelkova serrata                  | Deciduous | 18 | 13 | 3  | No observable problems  |
| CC-60 | Oranmental Pear    | Pyrus calleryana                 | Deciduous | 15 | 7  | 2  | No observable problems  |
| CC-61 | Oranmental Pear    | Pyrus calleryana                 | Deciduous | 15 | 10 | 3  | Damage at base of trunk and damage at 9 feet on trunk                                     |
| CC-62 | European Hackberry | Celtis australis                 | Deciduous | 46 | 42 | 32 | No observable problems  |
| CC-63 | European Hackberry | Celtis australis                 | Deciduous | 46 | 37 | 29 | dead branch   |
| CC-64 | European Hackberry | Celtis australis                 | Deciduous | 46 | 37 | 30 | Dead branches   |
| CC-65 | European Hackberry | Celtis australis                 | Deciduous | 36 | 20 | 12 | Damage to trunk   |
| CC-66 | Chinese Hackberry  | Celtis sinensis                  | Deciduous | 46 | 40 | 21 | Damage at trunk and branch  |
| CC-67 | Chinese Hackberry  | Celtis sinensis                  | Deciduous | 46 | 46 | 14 | Mistletoe, bark damage at branch  |
| CC-68 | Chinese Hackberry  | Celtis sinensis                  | Deciduous | 46 | 55 | 23 | No observable problems  |
| CC-69 | Redwood            | Sequoia sempervirens             | Evergreen | 81 | 42 | 47 | Surface roots   |
| CC-70 | London Plane       | Platanus x acerifolia            | Deciduous | 24 | 9  | 4  | Suckers at base   |
| CC-71 | London Plane       | Platanus x acerifolia            | Deciduous | 20 | 6  | 3  | damage at base  |
| CC-72 | London Plane       | Platanus x acerifolia            | Deciduous | 25 | 8  | 4  | Damage at base, needs minor pruning to remove branching that is next to an another branch |
| CC-73 | Redwood            | Sequoia sempervirens             | Evergreen | 57 | 35 | 32 | Surface roots   |

|        |                     |                              |           |    |    |    |  |  |
|--------|---------------------|------------------------------|-----------|----|----|----|--|--|
| CC-74  | Chinese Pistache    | <i>Pistacia chinensis</i>    | Deciduous | 33 | 26 | 10 | Damage at base   |  |
| CC-75  | Honey Locust        | <i>Gleditsia triacanthos</i> | Deciduous | 38 | 36 | 16 | Trunk damage at base of tree, mistletoe  |  |
| CC-76  | Redwood             | <i>Sequoia sempervirens</i>  | Evergreen | 42 | 16 | 12 | Some surface roots   |  |
| CC-77  | Redwood             | <i>Sequoia sempervirens</i>  | Evergreen | 56 | 18 | 20 | Suckering at base  |  |
| CC-78  | Redwood             | <i>Sequoia sempervirens</i>  | Evergreen | 68 | 31 | 32 | SE side trimmed due to powerline proximity   |  |
| CC-79  | Valley Oak          | <i>Quercus lobata</i>        | Deciduous | 22 | 10 | 4  | Damage and possible disease at base of tree  |  |
| CC-80  | Valley Oak          | <i>Quercus lobata</i>        | Deciduous | 14 | 10 | 4  | Damage at base of trunk  |  |
| CC-81  | Chinese Hackberry   | <i>Celtis sinensis</i>       | Deciduous | 39 | 31 | 13 | Some surface roots, some dead branches, needs pruning  |  |
| CC-82  | London Plane        | <i>Platanus x acerifolia</i> | Deciduous | 49 | 21 | 16 | South side pruned due to proximity to powerline, suckering at base, visible trunk scarring on main leader 2/3 up trunk | Recommend arborist review of main leader |
| CC-83  | Valley Oak          | <i>Quercus lobata</i>        | Deciduous | 18 | 5  | 3  | Damage at base of trunk  |  |
| CC-84  | Valley Oak          | <i>Quercus lobata</i>        | Deciduous | 18 | 7  | 3  | Damage at base of trunk  | multi                                    |
| CC-85  | Valley Oak          | <i>Quercus lobata</i>        | Deciduous | 23 | 13 | 5  | No observable problems   | Remove stake and water bag               |
| CC-86  | Chinese Pistache    | <i>Pistacia chinensis</i>    | Deciduous | 42 | 26 | 12 | Some damage at base could use some pruning to clean up canopy  |  |
| CC-87  | Chinese Tallow      | <i>Sapium sebiferum</i>      | Deciduous | 40 | 22 | 10 | Damage at base, surface roots  |  |
| CC-88  | California sycamore | <i>Platanus racemosa</i>     | Deciduous | 55 | 20 | 18 | Covered in ivy, been pruned hard due to power lines. Very little value   |  |
| CC-89  | Chinese Tallow      | <i>Sapium sebiferum</i>      | Deciduous | 40 | 22 | 12 | Damage at base, surface roots  |  |
| CC-90  | Texas Umbrella Tree | <i>Melia azedarach</i>       | Deciduous | 48 | 35 | 16 | Damage at base   |  |
| CC-91  | California sycamore | <i>Platanus racemosa</i>     | Deciduous | 75 | 48 | 21 | Noticeable disease in tree, some crossing branches should be removed up top  |  |
| CC-92  | Texas Umbrella Tree | <i>Melia azedarach</i>       | Deciduous | 44 | 31 | 18 | Damage at base of trunk  |  |
| CC-93  | Valley Oak          | <i>Quercus lobata</i>        | Deciduous | 13 | 7  | 2  | Damage at base of trunk  | Remove stake                             |
| CC-94  | Honey Locust        | <i>Gleditsia triacanthos</i> | Deciduous | 53 | 42 | 19 | Trunk overtaken by ivy   | Remove stake                             |
| CC-95  | Valley Oak          | <i>Quercus lobata</i>        | Deciduous | 11 | 8  | 2  | No observable problems   | Remove stake                             |
| CC-96  | Chinese Pistache    | <i>Pistacia chinensis</i>    | Deciduous | 37 | 24 | 10 | No observable problems   |  |
| CC-97  | Cork Oak            | <i>Quercus suber</i>         | Evergreen | 15 | 8  | 3  | Damage at base of trunk  | Remove stake                             |
| CC-98  | Chinese Pistache    | <i>Pistacia chinensis</i>    | Deciduous | 41 | 24 | 11 | No observable problems   |  |
| CC-99  | Valley Oak          | <i>Quercus lobata</i>        | Deciduous | 20 | 7  | 3  | No observable problems   | Remove tree stake and plastic tie        |
| CC-100 | Willow Oak          | <i>Quercus phellos</i>       | Deciduous | 13 | 7  | 2  | Damage at base of trunk  | Remove stake                             |
| CC-101 | Chinese Pistache    | <i>Pistacia chinensis</i>    | Deciduous | 39 | 39 | 13 | Minor ivy growing on base, no other observable problems, growing into power lines                                      |  |
| CC-102 | Valley Oak          | <i>Quercus lobata</i>        | Deciduous | 7  | 3  | 1  | Trunk damage by stake  | Remove stake                             |
| CC-103 | Chinese Pistache    | <i>Pistacia chinensis</i>    | Deciduous | 28 | 34 | 9  | No observable problems   |  |
| CC-104 | Chinese Pistache    | <i>Pistacia chinensis</i>    | Deciduous | 39 | 25 | 9  | Covered in privet suckers, should be cleared out, needs pruning  |  |
| CC-105 | Chinese Pistache    | <i>Pistacia chinensis</i>    | Deciduous | 50 | 48 | 12 | Has some vines growing on it, hard pruned on back side due to power lines  |  |



Data Collection - Cesar Chavez Elementary School - Tree Data

|        |                     |                               |           |    |    |    |   |              |
|--------|---------------------|-------------------------------|-----------|----|----|----|---|--------------|
| CC-106 | Chinese Pistache    | <i>Pistacia chinensis</i>     | Deciduous | 42 | 39 | 12 | Covered in sucker growth of other shrubs, should be removed for tree. Pruned hard on back side due to power lines, otherwise no other observable problems |              |
| CC-107 | Valley Oak          | <i>Quercus lobata</i>         | Deciduous | 11 | 8  | 2  | Significant damage at base of trunk, trunk lean to 5' and then straightens out, trunk damage from tree stake  |              |
| CC-108 | California Privet   | <i>Ligustrum ovalifolium</i>  | Deciduous | 31 | 20 | 8  | Covered in a bunch of other stuff, being cut up due to overhead power lines   |              |
| CC-109 | California Privet   | <i>Ligustrum ovalifolium</i>  | Deciduous | 26 | 20 | 4  | Half dead, covered in volunteers of other random bushes, under power lines  |              |
| CC-110 | Fig                 | <i>Ficus carica</i>           | Deciduous | 31 | 32 | 11 | Damage on branches  |              |
| CC-111 | Valley Oak          | <i>Quercus lobata</i>         | Deciduous | 20 | 15 | 3  | No observable problems  | Remove stake |
| CC-112 | Valley Oak          | <i>Quercus lobata</i>         | Deciduous | 15 | 10 | 2  | Damage at base of trunk   | Remove stake |
| CC-113 | Valley Oak          | <i>Quercus lobata</i>         | Deciduous | 13 | 7  | 2  | Suckers at base of tree   | Remove stake |
| CC-114 | Fig                 | <i>Ficus carica</i>           | Deciduous | 23 | 18 | 6  | Suckers at base of tree   |              |
| CC-115 | Chinese Pistache    | <i>Pistacia chinensis</i>     | Deciduous | 37 | 32 | 11 | Damage at base  |              |
| CC-116 | Texas Umbrella Tree | <i>Melia azedarach</i>        | Deciduous | 45 | 33 | 21 | Surface roots and suckers   |              |
| CC-117 | Texas Umbrella Tree | <i>Melia azedarach</i>        | Deciduous | 42 | 29 | 17 | Surface roots   |              |
| CC-118 | Chinese Tallow      | <i>Sapium sebiferum</i>       | Deciduous | 46 | 21 | 14 | Suckers and surface roots   |              |
| CC-119 | Chinese Pistache    | <i>Pistacia chinensis</i>     | Deciduous | 48 | 42 | 16 | Damage at base  |              |
| CC-120 | Oranmental Pear     | <i>Pyrus calleryana</i>       | Deciduous | 44 | 33 | 10 | Damage at base  |              |
| CC-121 | Texas Umbrella Tree | <i>Melia azedarach</i>        | Deciduous | 42 | 31 | 15 | Some surface roots, damage at base of trunk   |              |
| CC-122 | Chinese Elm         | <i>Ulmus parvifolia</i>       | Deciduous | 68 | 59 | 21 | Surface roots   |              |
| CC-123 | Chinese Pistache    | <i>Pistacia chinensis</i>     | Deciduous | 40 | 37 | 12 | No observable problems  |              |
| CC-124 | Chinese Elm         | <i>Ulmus parvifolia</i>       | Deciduous | 73 | 62 | 30 | Surface roots   |              |
| CC-125 | Chinese Elm         | <i>Ulmus parvifolia</i>       | Deciduous | 59 | 57 | 25 | Surface roots   |              |
| CC-126 | Chinese Elm         | <i>Ulmus parvifolia</i>       | Deciduous | 64 | 55 | 22 | Trunk damage  |              |
| CC-127 | Chinese Hackberry   | <i>Celtis sinensis</i>        | Deciduous | 37 | 29 | 11 | Many surface roots  |              |
| CC-128 | Chinese Pistache    | <i>Pistacia chinensis</i>     | Deciduous | 29 | 29 | 8  | Surface roots   |              |
| CC-129 | Honey Locust        | <i>Gleditsia triacanthos</i>  | Deciduous | 35 | 31 | 25 | Cankers on multiple branches and base   |              |
| CC-130 | Texas umbrella tree | <i>Melia azedarach</i>        | Deciduous | 31 | 26 | 21 | Damage on branches  |              |
| CC-131 | Honey Locust        | <i>Gleditsia triacanthos</i>  | Deciduous | 46 | 29 | 12 | Canker on branch  |              |
| CC-132 | Honey Locust        | <i>Gleditsia triacanthos</i>  | Deciduous | 42 | 33 | 13 | Mistletoe, surface roots , broken branches  |              |
| CC-133 | Texas Umbrella Tree | <i>Melia azedarach</i>        | Deciduous | 48 | 22 | 14 | Branch damage   |              |
| CC-134 | Chinese Elm         | <i>Ulmus parvifolia</i>       | Deciduous | 33 | 21 | 6  | Surface roots, damage at base of trunk  |              |
| CC-135 | European Hackberry  | <i>Celtis australis</i>       | Deciduous | 48 | 45 | 23 | Lot of dead branches need to be removed, crossing branches, could use some pruning to clean up canopy   |              |
| CC-136 | European Hackberry  | <i>Celtis australis</i>       | Deciduous | 48 | 45 | 24 | Some dead branches, could use pruning to clean up canopy  |              |
| CC-137 | Chinese Hackberry   | <i>Celtis sinensis</i>        | Deciduous | 48 | 45 | 11 | Minor dead branches   |              |
| CC-138 | Fruitless Mulberry  | <i>Morus alba</i> 'fruitless' | Deciduous | 50 | 59 | 26 | Very poor branching, crossing branches, needs pruning   |              |

|        |                   |                                 |           |    |    |    |   |       |
|--------|-------------------|---------------------------------|-----------|----|----|----|---|-------|
| CC-139 | Chinese Elm       | <i>Ulmus parvifolia</i>         | Deciduous | 39 | 34 | 8  | Large wound on trunk, needs pruning to clean up canopy, some surface roots          |       |
| CC-140 | Ash               | <i>Fraxinus</i>                 | Deciduous | 39 | 22 | 17 | A lot of dead branches, mistletoe toe   |       |
| CC-141 | London Plane      | <i>Platanus x acerifolia</i>    | Deciduous | 42 | 17 | 9  | Poor condition, very few branches   |       |
| CC-142 | Sawleaf Zelkova   | <i>Zelkova serrata</i>          | Deciduous | 59 | 45 | 29 | Dead branches but otherwise healthy looking   |       |
| CC-143 | Sawleaf Zelkova   | <i>Zelkova serrata</i>          | Deciduous | 59 | 45 | 10 | Dual leader with narrow attachments   |       |
| CC-144 | Sawleaf Zelkova   | <i>Zelkova serrata</i>          | Deciduous | 39 | 39 | 20 | Canopy weighted to the south  |       |
| CC-145 | Ash               | <i>Fraxinus</i>                 | Deciduous | 56 | 56 | 18 | Pruned due to power lines, dead branches  |       |
| CC-146 | Ash               | <i>Fraxinus</i>                 | Deciduous | 62 | 39 | 21 | Lot of sucker growth, lopsided over building hard pruned on back due to power lines |       |
| CC-147 | Ash               | <i>Fraxinus</i>                 | Deciduous | 42 | 34 | 15 | Pruned due to power lines, poor branching structure                                 |       |
| CC-148 | Ash               | <i>Fraxinus</i>                 | Deciduous | 34 | 28 | 16 | Half dead, bark is falling off trunk  |       |
| CC-149 | Chinese Hackberry | <i>Celtis sinensis</i>          | Deciduous | 48 | 45 | 17 | No observable problems  |       |
| CC-150 | False Cypress     | <i>Chamaecyparis lawsoniana</i> | Evergreen | 45 | 45 | 3  | Low branching, lot of sap   | Multi |
| CC-151 | Sawleaf Zelkova   | <i>Zelkova serrata</i>          | Deciduous | 45 | 45 | 19 | Crossing trunks, needs significant pruning  |       |
| CC-152 | Sawleaf Zelkova   | <i>Zelkova serrata</i>          | Deciduous | 31 | 22 | 5  | Growing right at fence  |       |